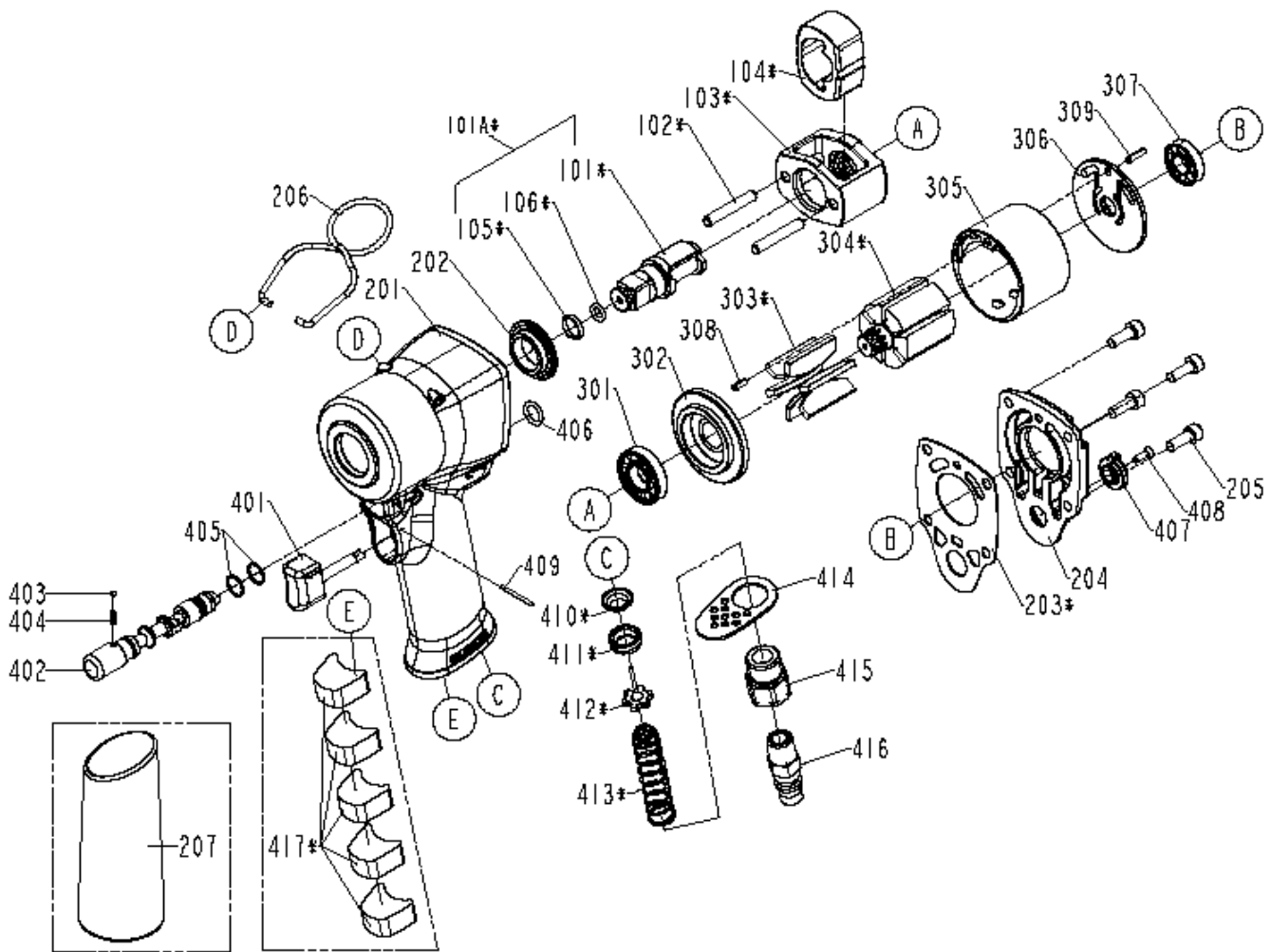


APP200 - 1/2" Stubby Impact Wrench



Ref	PCL Part No	Description
101	APS200/101	Anvil
101A	APS200/101A	Anvil unit
102	APS200/102	Hammer pin
103	APS200/103	Hammer frame
104	APS200/104	Hammer
105	APS200/105	Socket retainer
106	APS200/106	O-ring
201	APS200/201	Housing
202	APS200/202	Hammer case bushing
203	APS200/203	Packing
204	APS200/204	Rear cover
205	APS200/205	Hex soc HD bolt
206	APS200/206	Spring retainer
301	APS200/301	Bearing
302	APS200/302	Front bearing plate
303	APS200/303	Blades
304	APS200/304	Rotor
305	APS200/305	Cylinder
306	APS200/306	Rear end plate

Ref	PCL Part No	Description
307	APS200/307	Bearing
308	APS200/308	Spring pin
309	APS200/309	Spring pin
401	APS200/401	Trigger unit
402	APS200/402	Reverse valve
403	APS200/403	Ball
404	APS200/404	Positioning spring
405	APS200/405	O-ring
406	APS200/406	O-ring
407	APS200/407	Spring A
408	APS200/408	Flat HD screw
409	APS200/409	Spring pin
410	APS200/410	Seal bushing
411	APS200/411	Seal
412	APS200/412	Tip valve
413	APS200/413	Spring
414	APS200/414	Deflector
415	APS200/415	Air inlet